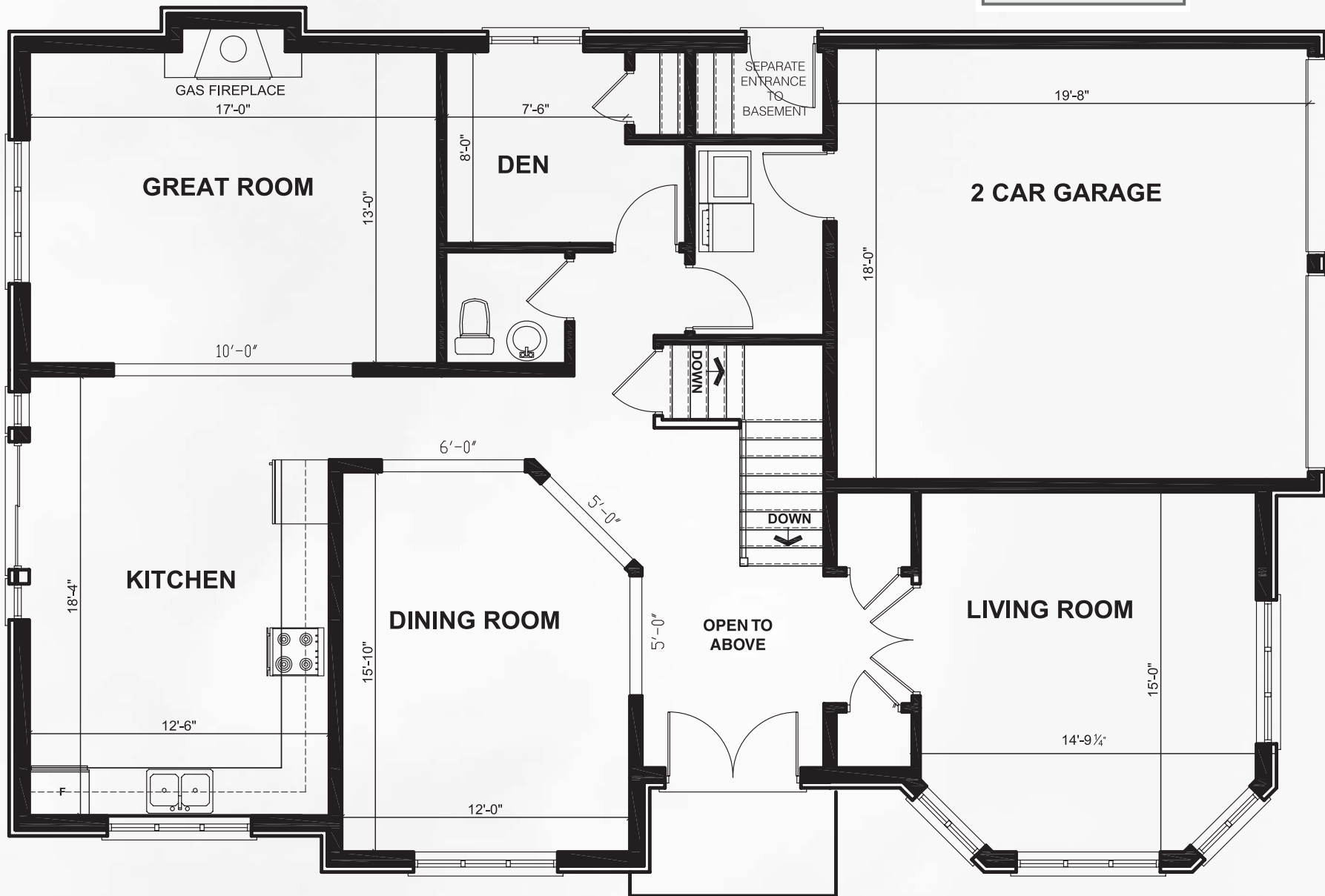


The Mosaic

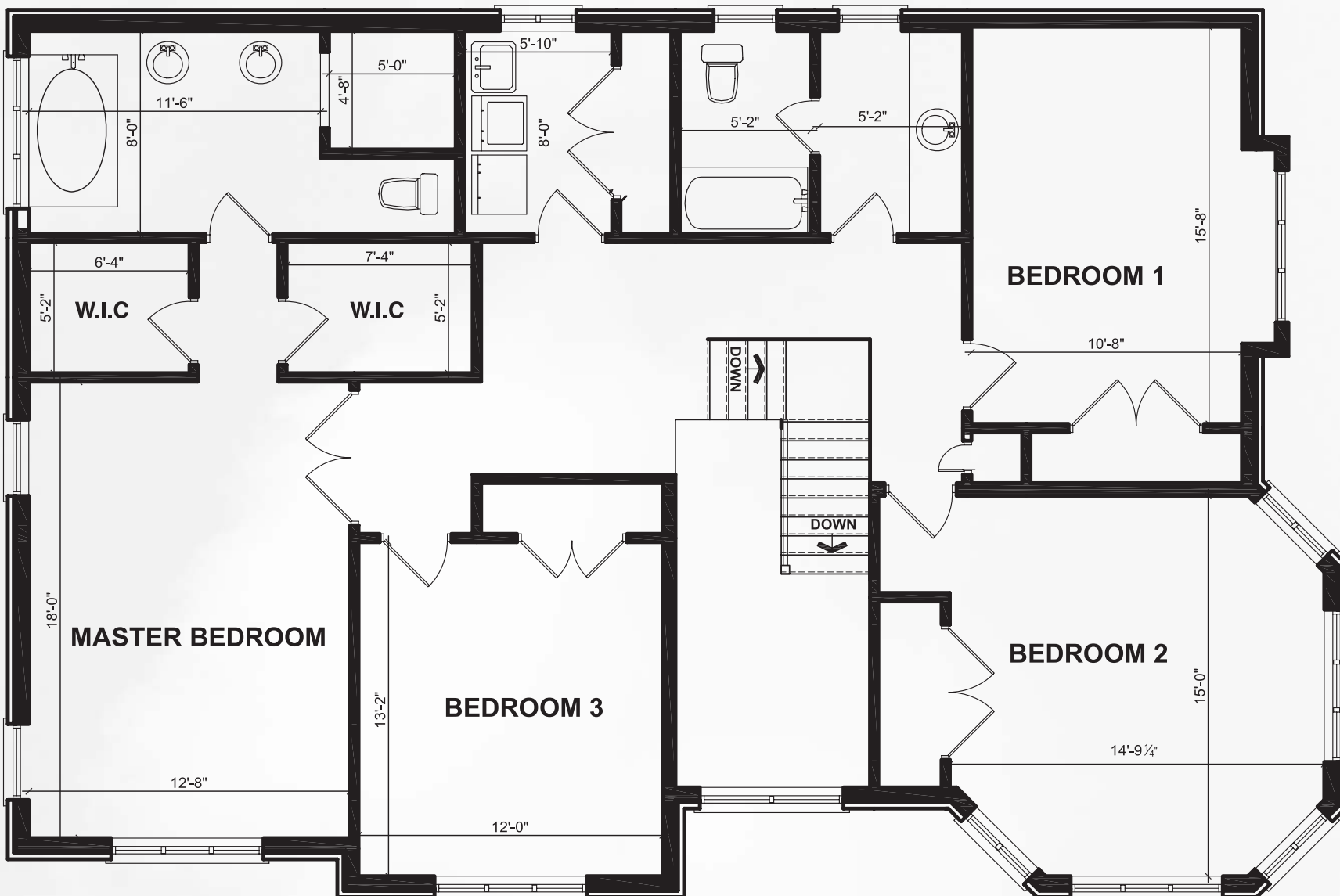


Zeina Homes is a Registered Builder with the Taron Warranty Corporation, which administers the Ontario New Home Warranties Plan Act.

includes open to above 140 sq. ft.



MAIN FLOOR 1448 sq.ft.



SECOND FLOOR 1739 sq.ft.

Interior layout changes can be done at no extra charges.

All house renderings and interior drawings are artist's conceptions. Material specifications and floor plans are subject to change without notice. All floor plans are approximate dimensions. Note: Actual usable floor space may vary from the stated floor areas. Steps may vary at any exterior entrance ways due to grading. E & O.E.